



Government of India
Ministry of Earth Sciences



India Meteorological Department

PRESS RELEASE - 4

Time of issue: 1530 hours IST

Dated: 28-09-2021

Sub: Deep Depression (remnant of Cyclonic Storm 'GULAB') weakened into a well marked Low pressure area over western parts of Vidarbha & neighbourhood

Yesterday's deep depression over South Odisha and adjoining south Chattisgarh moved nearly westwards and weakened into a depression in the evening (1730 hours IST) of 27th September over north Telangana and adjoining areas. Moving further west-northwestwards, it weakened into a Well Marked Low Pressure Area over **western parts of Vidarbha & neighbourhood** around noon (1130 hours IST) of today, the 28th September 2021.

It is likely to move northwestwards and weaken gradually during next 24 hours. The system is likely to emerge into northeast Arabian Sea and adjoining Gujarat coast around 30th September and thereafter, it is likely to further intensify into a depression over northeast Arabian Sea during subsequent 24 hours.

Realised rainfall amount (≥ 7 cm) in association with the system during past 24 hours ending at 0830 hrs IST of 28th September 2021 is given in **Annexure**.

Warnings:

(i) Rainfall

- 28th Sept.: Light to moderate rainfall at most places with **heavy to very heavy & extremely heavy falls at isolated places** very likely over north Konkan, north Madhya Maharashtra, Marathwada and south Gujarat region; heavy to very heavy falls at isolated places over Saurashtra & Kutch and heavy rainfall at isolated places over Vidarbha.
- 29th Sept.: Light to moderate rainfall at most places with **heavy to very heavy & extremely heavy falls at isolated places** very likely over south Gujarat, heavy to very heavy falls at isolated places over north Madhya Maharashtra and Konkan and heavy rainfall at isolated places over Marathwada.
- 30th Sept: Light to moderate rainfall at most places with **heavy to very heavy falls at isolated places** very likely over Saurashtra & Kutch and heavy falls at isolated places over Gujarat region.

(ii) Wind warning

- Strong wind, speed reaching 30-40 kmph gusting to 50 kmph, is likely to prevail over western parts of Vidarbha and adjoining districts of Marathwada and Madhya Maharashtra during next 24 hours and decrease thereafter.
- Squally wind speed reaching 45-55 kmph gusting to 65 kmph very likely over northeast Arabian Sea and along & off Gujarat and adjoining north Maharashtra coasts on 30th Sep. and 1st Oct., 2021.

(iii) State of Sea:

State of Sea will be rough to very rough over northeast Arabian Sea and along & off Gujarat and adjoining north Maharashtra coasts during 30th September to 1st October.

(iv) Fishermen warning:

Fishermen are advised not to venture into northeast Arabian Sea on 30th September and 1st October.

Contact: Cyclone Warning Division, Office of the Director General of Meteorology,
India Meteorological Department, Ministry of Earth Sciences.

Phone: (91) 11-24652484, FAX: (91) 11-24643128, 24623220, E-mail: cwdhq2008@gmail.com, Website: rsmcnewdelhi.imd.gov.in

Spatial rainfall distribution: Isolated: <25%, A few: 26-50%, Many: 51-75%, Most: 76-100%

Rainfall amount (mm): Heavy rain: 64.5 – 115.5, Very heavy rain: 115.6 – 204.4, Extremely heavy rain: 204.5 or more.

(v) EXPECTED IMPACT & ACTION SUGGESTED due to Strong winds & very Heavy/Extremely heavy Rainfall.

- Partial Damage to thatched huts.
- Major damage to Kutcha and minor damage to Pucca roads.
- Localized Flooding of roads, inundation and water logging in low lying areas and closure of underpasses mainly in urban areas.
- Occasional reduction in visibility due to heavy rainfall.
- Disruption of traffic in cities due to water logging in roads.
- Possibilities of damage to vulnerable structure.
- Localized Landslides/Mudslides
- Damage to standing crops and horticulture including paddy, banana, papaya trees and orchards due to inundation and strong winds.
- It may lead to riverine flooding in some river catchments (for riverine flooding please visit Web page of CWC)

Action Suggested.

- Avoid staying in vulnerable structure.
- Avoid going to areas that face the water logging problems often.
- Check for traffic congestion on your route before leaving for your destination.
- Follow any traffic advisories that are issued in this regard.
- Follow IMD warnings for updates

This is the last Press Release pertaining to this system. However, regular weather bulletins will continue from National Weather Forecasting Centre, as well as from the Regional & State level Forecasting Offices of IMD. The emergence of the remnant system into north Arabian Sea and its chances of further intensification are being closely monitored.

Kindly visit www.rsmcnewdelhi.imd.gov.in and www.mausam.imd.gov.in for regular updates

Contact: Cyclone Warning Division, Office of the Director General of Meteorology,
India Meteorological Department, Ministry of Earth Sciences.

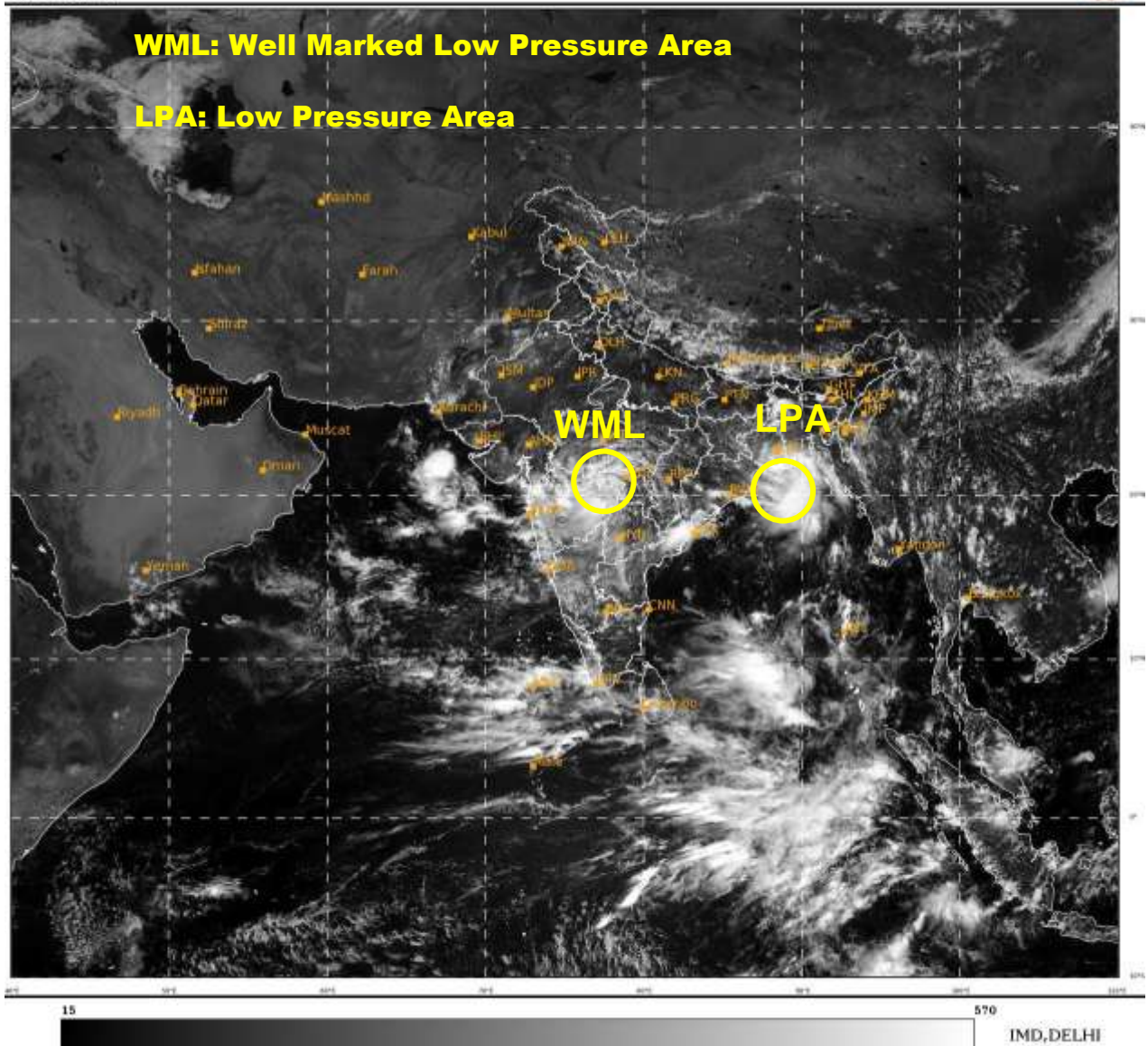
Phone: (91) 11-24652484, FAX: (91) 11-24643128, 24623220, E-mail: cwdhq2008@gmail.com, Website: rsmcnewdelhi.imd.gov.in

Spatial rainfall distribution: Isolated: <25%, A few: 26-50%, Many: 51-75%, Most: 76-100%

Rainfall amount (mm): Heavy rain: 64.5 – 115.5, Very heavy rain: 115.6 – 204.4, Extremely heavy rain: 204.5 or more.

SAT : INSAT-3D IMG
Visible Count 0.65 um
LIC Mercator

28-09-2021/(0700 to 0726) GMT
28-09-2021/(1230 to 1256) IST



Contact: Cyclone Warning Division, Office of the Director General of Meteorology,
India Meteorological Department, Ministry of Earth Sciences.

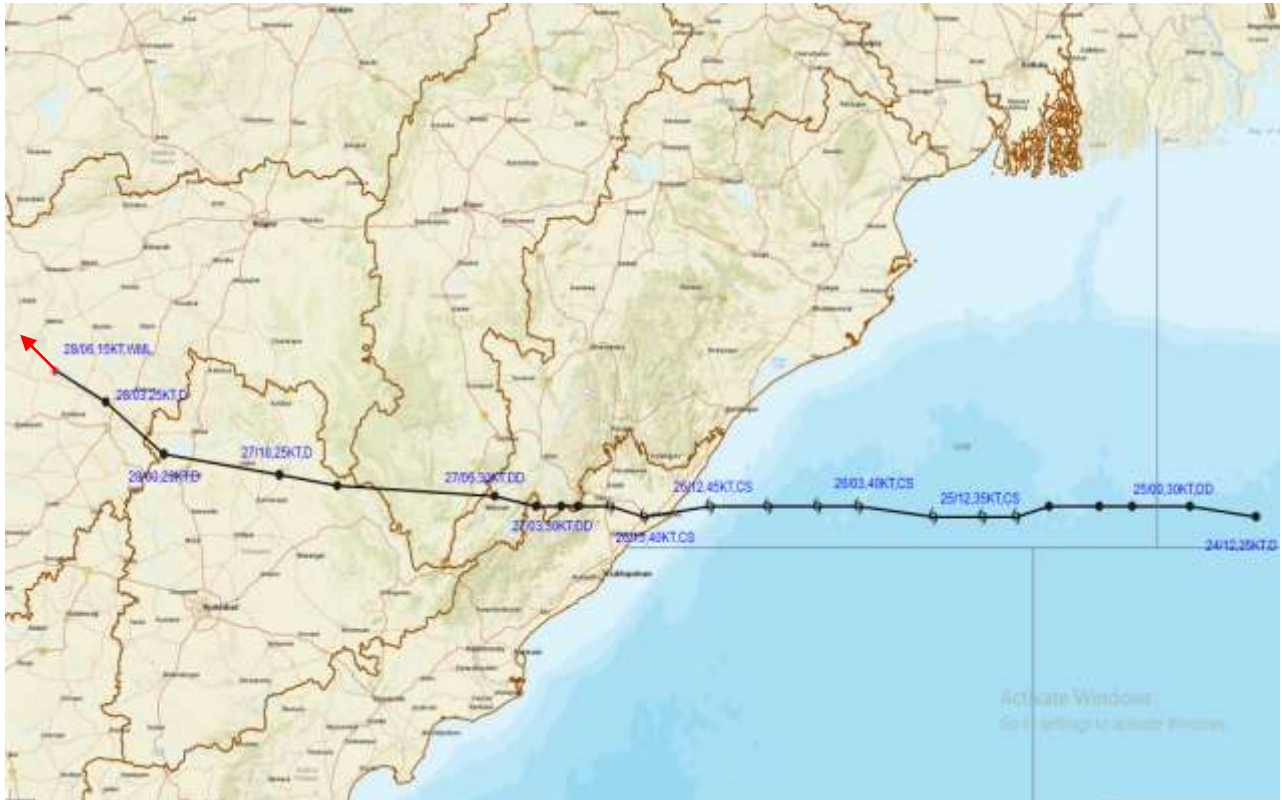
Phone: (91) 11-24652484, FAX: (91) 11-24643128, 24623220, E-mail: cwdhq2008@gmail.com, Website: rsmcnewdelhi.imd.gov.in

Spatial rainfall distribution: Isolated: <25%, A few: 26-50%, Many: 51-75%, Most: 76-100%

Rainfall amount (mm): Heavy rain: 64.5 – 115.5, Very heavy rain: 115.6 – 204.4, Extremely heavy rain: 204.5 or more.



OBSERVED TRACK OF CYCLONIC STORM 'GULAB' OVER BAY OF BENGAL DURING 24TH TO 28TH SEPTEMBER, 2021



DATE/TIME IN UTC
 IST=UTC + 0530
 L: LOW PRESSURE AREA
 WML: WELL MARKED LOW PRESSURE AREA
 D: DEPRESSION (17-27 KT)
 DD: DEEP DEPRESSION (28-33 KT)
 CS: CYCLONIC STORM (34-47 KT)
 SCS: SEVERE CYCLONIC STORM (48-63KT)
 VSCS: VERY SEVERE CYCLONIC STORM (64-89 KT)
 ESCS: EXTREMELY SEVERE CYCLONIC STORM (90-119 KT)
 SuCS: SUPER CYCLONIC STORM (≥ 120 KT)

● LESS THAN 34 KT
 ○ 34-47 KT
 ● ≥ 48 KT
 — OBSERVED TRACK
 — FORECAST TRACK
 ■ CONE OF UNCERTAINTY
 AREA OF MAXIMUM SUSTAINED WIND SPEED:
 ■ 28-33 KT (52-61 KMPH)
 ■ 34-49 KT (62-91 KMPH)
 ■ 50-63 KT (92-117 KMPH)
 ■ ≥ 64 KT (≥118 KMPH)

IMPACT OVER THE SEA

| MSW (knot/kmph) | Impact | Action |
|-----------------|------------------------|--|
| 28-33 (52-61) | Very rough seas | Total suspension of fishing operations |
| 34-49 (62-91) | High to very high seas | Total suspension of fishing operations |
| 50-63 (92-117) | Very high seas | Total suspension of fishing operations |
| ≥ 64 (≥118) | Phenomenal | Total suspension of fishing operations |

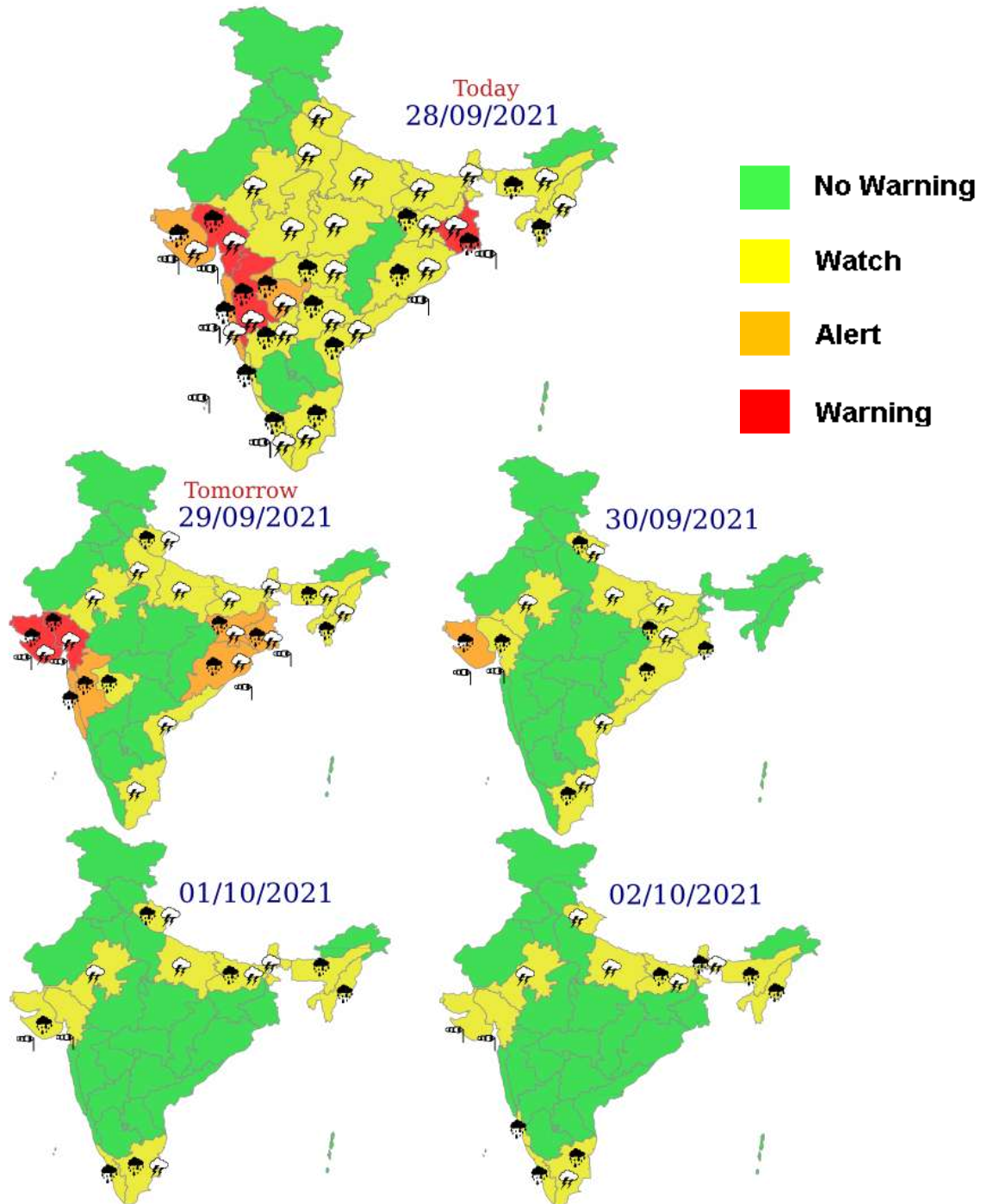
Contact: Cyclone Warning Division, Office of the Director General of Meteorology,
 India Meteorological Department, Ministry of Earth Sciences.

Phone: (91) 11-24652484, FAX: (91) 11-24643128, 24623220, E-mail: cwdhq2008@gmail.com, Website: rsmcnewdelhi.imd.gov.in

Spatial rainfall distribution: Isolated: <25%, A few: 26-50%, Many: 51-75%, Most: 76-100%

Rainfall amount (mm): Heavy rain: 64.5 – 115.5, Very heavy rain: 115.6 – 204.4, Extremely heavy rain: 204.5 or more.

Sub-division wise heavy rainfall warning for next 5 days



Contact: Cyclone Warning Division, Office of the Director General of Meteorology,
India Meteorological Department, Ministry of Earth Sciences.

Phone: (91) 11-24652484, FAX: (91) 11-24643128, 24623220, E-mail: cwdhq2008@gmail.com, Website: rsmcnewdelhi.imd.gov.in

Spatial rainfall distribution: Isolated: <25%, A few: 26-50%, Many: 51-75%, Most: 76-100%

Rainfall amount (mm): Heavy rain: 64.5 – 115.5, Very heavy rain: 115.6 – 204.4, Extremely heavy rain: 204.5 or more.

Annexure

Rainfall realised in cm (7 cm or more) during past 24 hours ending at 0830 hours IST of 28.09.2021

Odisha: Cuttack-13, Gajapati-8, Jajpur-7;

Chhattisgarh: Dantewada-18;

Coastal Andhra Pradesh & Yanam: Vishakhapatnam & West Godavari-13 each and Krishna & Vijaywada-8 each;

Telangana: Jakranpalle 23, Navipet & Dhar Palle 21 each, Ranjal, Dich Palle & Armur 18 each, Nandipet, Chandurthi & Sirsilla 17 each, Jammikunta & Bheemgal- 16 each, Yeda Palle, Makloor, Ellanthukunta, Jukkal, Sarangapurnrl & Velpur 15 each, Nizamabad, Bodhan, Nirmal, Shriramsag Pocha & Dilawarpur 14 each, Mudhole, Mogullapalle, Mallapur, Balkonda & Laxmanchanda 13 each, Srirampur, Nizam Sagar & Domakonda 12 each, Mortad, Venkatapur, Gundala, Elagaid, Tadwai Mlg & Peddapalle 11 each, Kusumanchi, Naga Reddipet, Konaraopeta, Kammar Palle, Metpalle, Madhira, Manthani, Machareddy & Bhiknur – 10 each, Sultanabad, Parkal, Kamareddy, Burgampadu, Pinapaka, Chegunta, Khanpur, Gambhiraopet, Thimmapur, Banswada, Madnur, Mulug, Boath, Ibrahimpatnam & Julapalle 9 each, Mustabad, Shadnagar, Choppadandi, Shayampet, Shamirpet, Papannapet, Karimnagar, Pitlam, Tupran, Govindaraopet, Dharmaram, Aswapuram & Dummugudem – 8 each and Yellareddypeta, Varni, Hakimpet, Kotgiri, Ramgundam, Bhupalpalle, Manuguru, Karimnagar, Venkatapuram, Manchal, Tekmal, Chigurumamidy, Lingampet, Birkoor, Bomraspeta, Ramayampet, Kothaguda, Bejjanki, Narayankhed, Tadwai, Kondurg, Bhadrachalam, Medak, Sadasivanagar – 7 each

Marathwada: Nanded-15, Aurangabad-13, Beed-11; Osmanabad & Latur-10 each; Jalna & Bir-8 each and Hingoli & Parbhani-7 each;

Vidarbha: Chandrapur-10; Buldana-9;

Madhya Maharashtra: Jalgaon-11, Kolhapur-7

West Madhya Pradesh: Dewas-7

Gujarat Region: Mehsana-9; Saurashtra & Kutch: Amreli-12, Gir Somnath-8. Jamnagar, Junagarh, Morbi and Porbandar-7 each;

Contact: Cyclone Warning Division, Office of the Director General of Meteorology,
India Meteorological Department, Ministry of Earth Sciences.

Phone: (91) 11-24652484, FAX: (91) 11-24643128, 24623220, E-mail: cwdhq2008@gmail.com, Website: rsmcnewdelhi.imd.gov.in

Spatial rainfall distribution: Isolated: <25%, A few: 26-50%, Many: 51-75%, Most: 76-100%

Rainfall amount (mm): Heavy rain: 64.5 – 115.5, Very heavy rain: 115.6 – 204.4, Extremely heavy rain: 204.5 or more.